

www.cmp-pharma.it



The only source of
knowledge is experience



Our Mission

Towards the future

» Excellence

CMP was imagined, projected and managed with the target of becoming a high-quality company. A strong moral system, the culture of changing and improving, the values and the responsibilities are the driving force of the modern companies which want to establish themselves in the market. All CMP employees should have clear that only through distinction (in method, inside and outside relationships, products and services) the company could guarantee its own future.

In an extremely competitive market the excellence aiming company must always be one step behind the competence and must set challenging targets with constant improvement and strongly innovative process. Only by encouraging this attitude the company will be able to create a winning team.

» Transparency

CMP believes a fundamental principle the sharing of processes, operating systems, technological innovations and each successful factor with all the people involved in the company. Information must freely circulate in the company. CMP commits itself to make clear to all external contacts its commercial policy, the goals to be reached and the tools to be used for such aim.

» Environment

The environmental protection and the risks prevention are fundamental points in CMP conduct. CMP promotes the energy conservation and the correct utilization of raw materials and recyclable products.



» **Customers**

Respect and fulfillment of the undertakings mean highly responsible behaviors and relations with customers to match the expectations and requirements defined in the contractual relationships. When dealing with Customers CMP uses a formal and prompt communication to make well clear the features and economic value of our products/services.

Contracts and communications with Customers are based on honesty and correctness, proficiency, transparency and co-operation. CMP aims to apply and preserve the mutual contracting relations. Each individual action is to be considered by customer a CMP action. CMP offers to Customer efficiency and liability. We listen to their needs converting them into a professional reply and receiving back a compensation.

» **Open-mindedness**

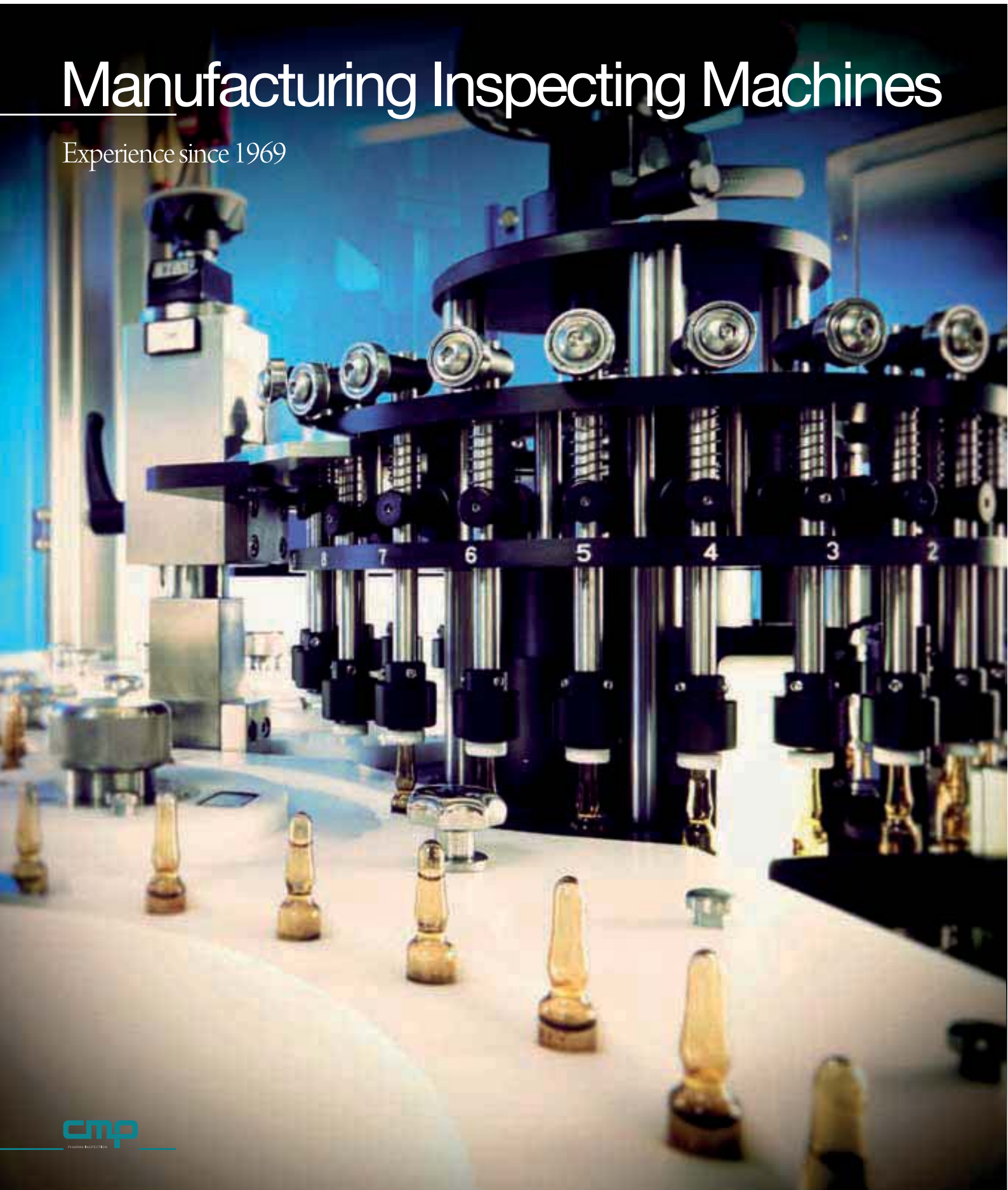
Thanks to the international relations CMP is receptive to new ideas and to the way in which people approach the views and knowledge of others both inside (among all employees) and outside (towards Customers). This does not mean that employees should be conventional or flattened towards their superiors, on the contrary everyone should be put in the proper condition to freely and openly express his/her opinion on technical and managing issues of his/her competence.

Open-mindedness is generally considered an important personal attribute to be part of CMP staff.

We at CMP see things
in a whole new way.

Manufacturing Inspecting Machines

Experience since 1969





- » We are a dynamic company with a considerable background transmitted by people who believed in their work and talent
- » We have inherited this experience by constantly improving our skills and trying to satisfy our Customers' requirements
- » We have believed in our Partners' ideas and intuitions and put in practice our Customers' advices
- » We have built a stimulating and agreeable working environment because we believe that the Company can develop if everybody grows up inside it
- » We have founded our work on ethical principles to build a company where its value goes beyond the mere economic results
- » We have designed our future by investing in the human resources of our surroundings because we believe in the "Made in Italy" and in our Country.
- » We have always invested in research and development as they are the progress basis: simple and developed mechanical solutions, last generation vision systems, high-quality components



Ampoules and vials inspection

Inspection at its best



CMP inspection machines can automatically inspect:

Standard inspections

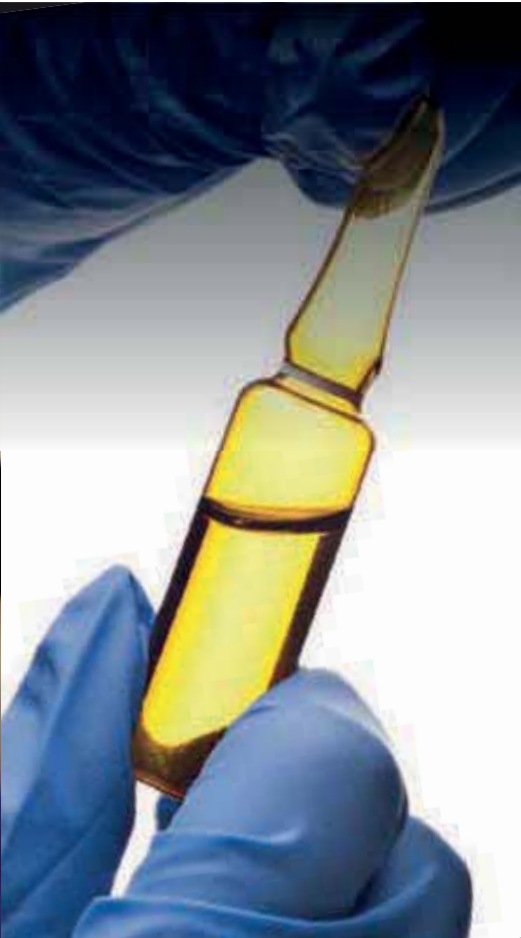
- » Extraneous reflecting and no reflecting particles, fibres, glasses
- » Correct filling level

Optional inspections

- » Cosmetic control (shape, height, black spots, position of the cap)
- » Ring/cap colour control
- » Colour of the product
- » Glass defects
- » Plunger inspection (for cartridges)

CMP Software

- » Up to 30 images for camera
- » Camera resolution up to 2 megapixel
- » 21 CFR part.11 compliant
- » Audit Trail



Fully automatic CMP Leak test machine suitable to detect pinholes or little cracks in the body and top of ampoules, vials, syringes (glass, plastic or BFS) using the HVLD (High Voltage Leak detection) technology. This inspection is based on the high voltage test method and the electrical conductivity of the fill product packaged in a non-conductive glass/plastic container: if any leak is present, the discharge current will flow through the pinhole into the container and the detection of this current will automatically cause the container to be rejected. This non-destructive method is apt to automatically check the 100% of the production to identify pinholes which could be hardly detected by other inspection methods.

Standard fields of applications of our equipment

- » Ampoules inspection
- » Vials inspection
- » Bottles inspection
- » Cartridges inspection

On request

- » Pre-filled syringes inspection
- » Bags inspection



SA5

Inspection Machine
for ampoules, vials or cartridges





APPLICATION

- Ampoules, vials and cartridges
- Capacity: from 1 ml to 30 ml
- Liquid or freeze-dried products (cosmetic control)

STANDARD INSPECTIONS

- Extraneous reflecting and no reflecting particles, fibres, glasses
- Correct filling level

OPTIONAL INSPECTIONS

- Cosmetic control (shape, height, black spots, position of the cap)
- Ring/cap colour control
- Colour of the product
- Printing
- Glass defects
- Plunger inspection (for cartridges)
- Leak test



In CMP product range SA5 is the more flexible solution. Projected in 2010 to support companies with small batches, SA5 in the following years has been appreciated by our Customers for its reliability and adaptability. A productivity up to 100 pcs/min combined with CMP software that can acquire up to 30 images per each camera make SA5 a suitable machine. A combination of back and bottom lights and CMP software allows to customize the machine as necessary.

Possible integration with leak test unit to check container integrity.



SA12

Inspection Machine
for ampoules, vials or cartridges





APPLICATION

- Ampoules, vials and cartridges
- Capacity: from 1 ml to 30 ml
- Liquid or freeze-dried products (cosmetic control)

STANDARD INSPECTIONS

- Extraneous reflecting and no reflecting particles, fibres, glasses
- Correct filling level

OPTIONAL INSPECTIONS

- Cosmetic control (shape, height, black spots, position of the cap)
- Ring/cap colour control
- Colour of the product
- Printing
- Glass defects
- Plunger inspection (for cartridges)
- Leak test

Automatic inspection machine SA12 has been projected as an answer to our Customers' needs and advices.

The productivity up to 200 pcs/min, the compact design and the performances have been setting SA12 as the leading unit of our production offer.

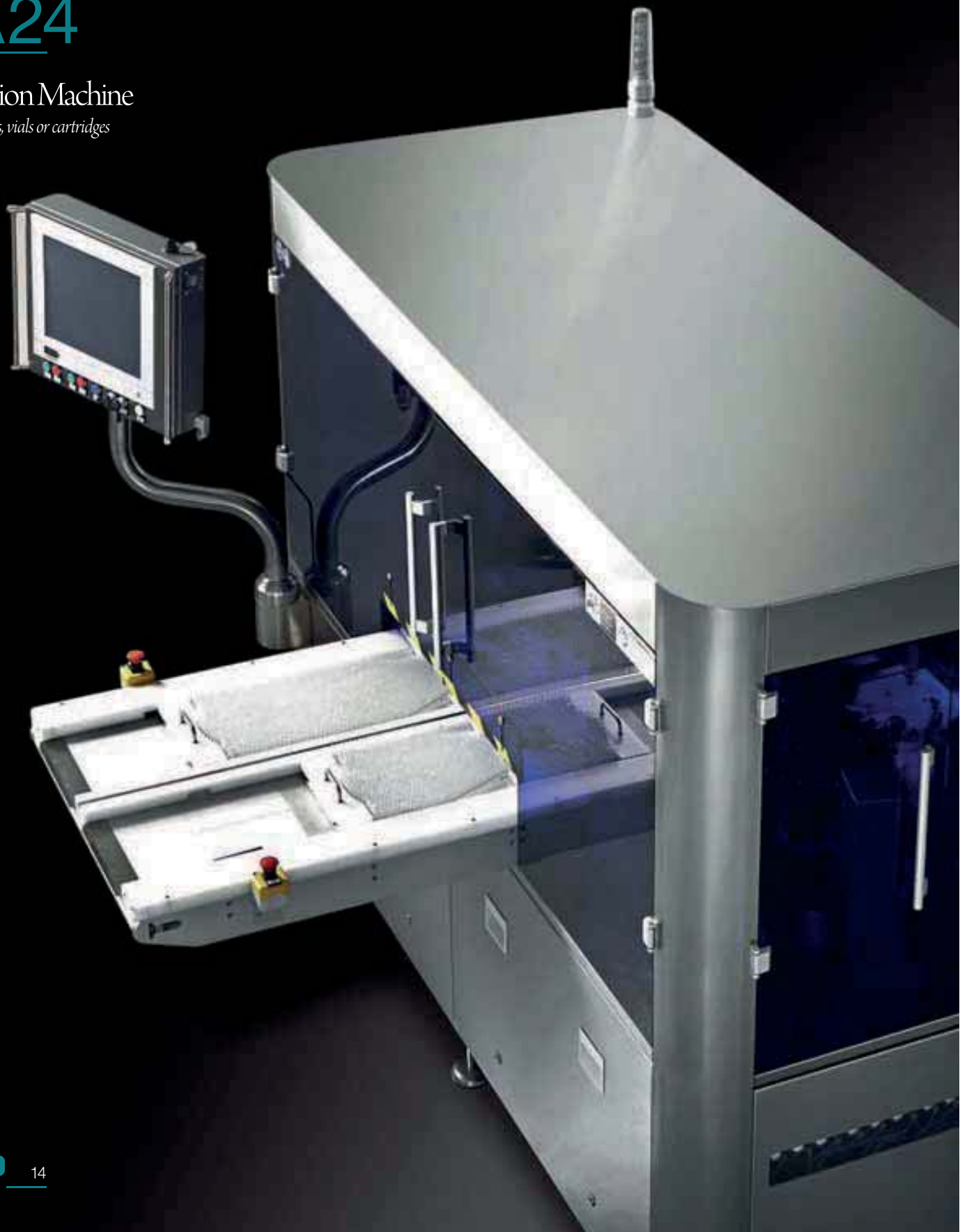
SA12 can handle ampoules, vials and cartridges with a capacity from 1 ml to 30 ml. A combination of back and bottom lights and CMP software allow to customize the machine as necessary.

Possible integration with leak test unit to check container integrity.



SA24

Inspection Machine
for ampoules, vials or cartridges





APPLICATION

- Ampoules, vials and cartridges
- Capacity: from 1 ml to 30 ml
- Liquid or freeze-dried products (cosmetic control)

STANDARD INSPECTIONS

- Extraneous reflecting and no reflecting particles, fibres, glasses
- Correct filling level

OPTIONAL INSPECTIONS

- Cosmetic control (shape, height, black spots, position of the cap)
- Ring/cap colour control
- Colour of the product
- Printing
- Glass defects
- Plunger inspection (for cartridges)
- Leak test

Automatic inspection machine with a max. production of 400 pcs/min for containers ranging from 1 ml to 30 ml.

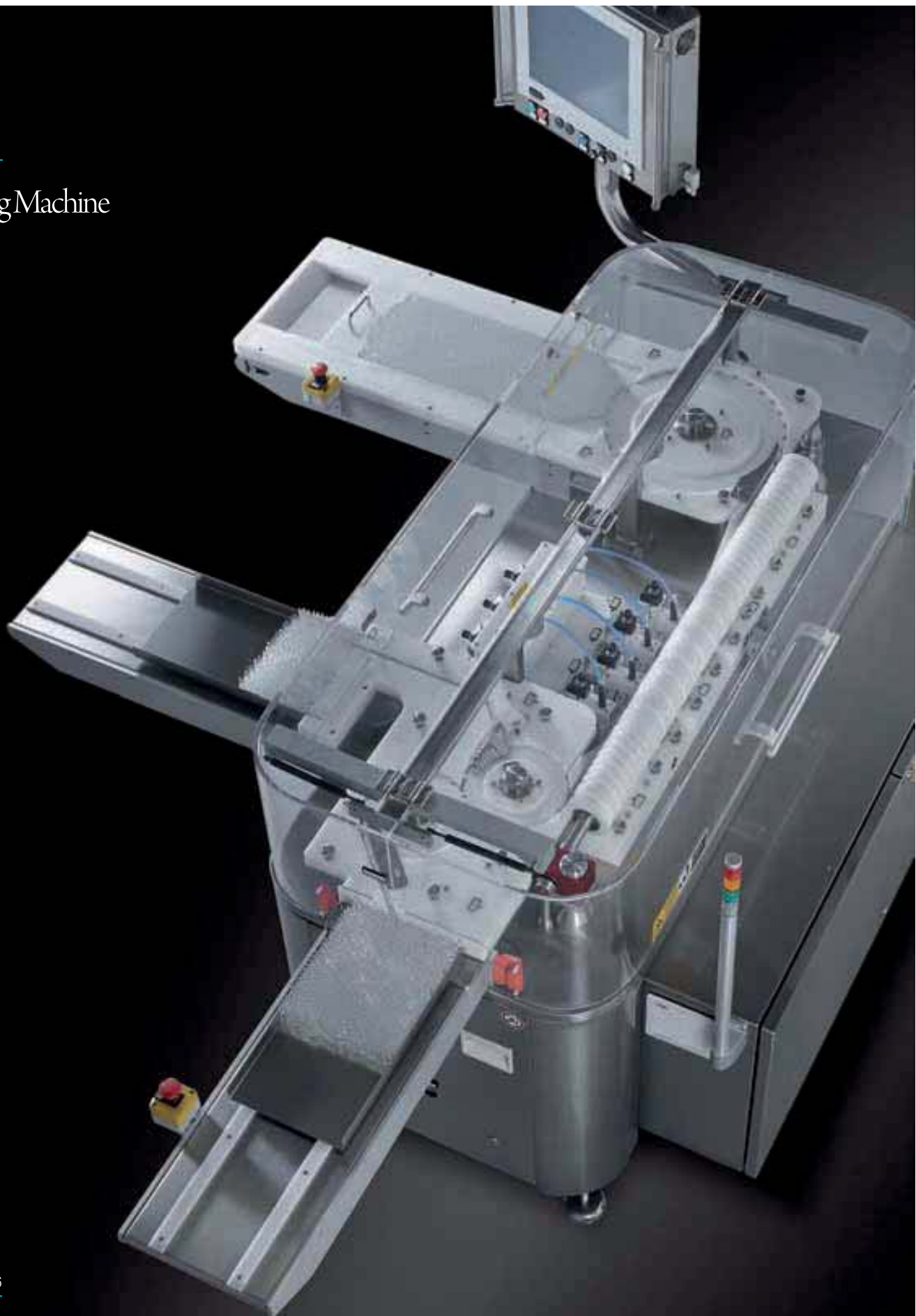
The use of high quality and reliability components allows to reach excellent performances according to the customer's requirements. Model SA24 can operate by trays or alternatively can be installed in line. A combination of back and bottom lights and CMP software allow to customize the machine as necessary.

Possible integration with leak test unit to check container integrity.



LT01

Leak Testing Machine





APPLICATION

- Ampoules and vials
- Capacity: from 1 ml to 30 ml

STANDARD INSPECTIONS

- Hairline fissures and pinholes
- Leaking ampoule neck tips

Over the years CMP, understanding the input coming from the market and the progression of the inspection requirements, developed its leak test technology in order to increase our machines' offer. LT01 is our leak test machine, the rational and compact design makes this equipment suitable to be inserted in any production context. The system is based on the High Voltage Leak Detection technology. It uses a high voltage electrical field and impedance measurement to check each container by No. 4 inspection units with customized electrodes. Its production output up to 400 pcs/min and the rotation system before and during inspection guarantee high quality performances.

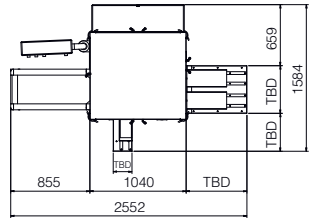
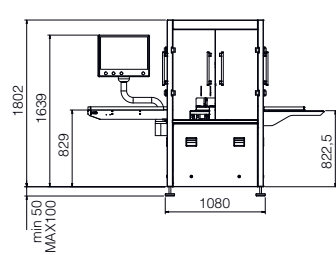


Technical Data

SA5_p.10



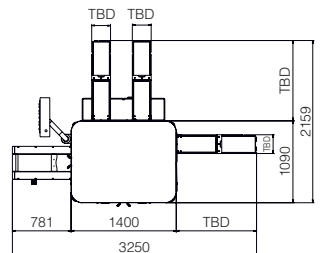
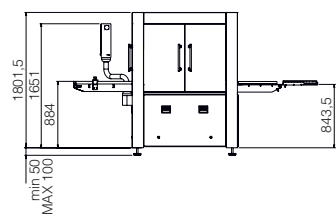
Production output	100 pcs/min
Range of diameters	From 8 to 32 mm
Max. height	110 mm
Power consumption	2 kW
Power supply	230 V single phase, 50-60 Hz
Compressed air	6 Bar
Air Consumption	150 lt/min
Weight	600 kg
Dimensions	2552 x 1584 x 1850 h mm
Design	Complies with current GMP regulations. Software in compliance with 21 CFR part11



SA12_p.12



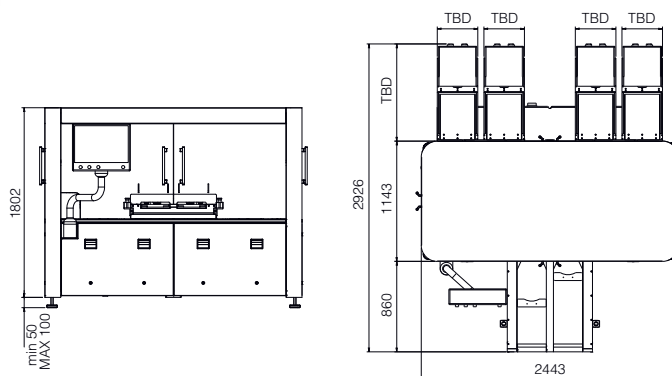
Production output	200 pcs/min
Range of diameters	From 8 to 32 mm
Max. height	110 mm
Power consumption	3 kW
Power supply	230 V single phase, 50-60 Hz
Compressed air	6 Bar
Air Consumption	200 lt/min
Weight	1400 kg
Dimensions	3250 x 2160 x 1850 h mm
Design	Complies with current GMP regulations. Software in compliance with 21 CFR part11



SA24_ p.14



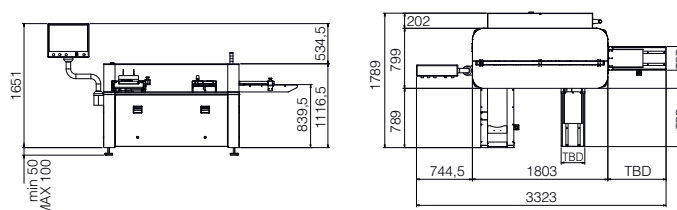
Production output	400 pcs/min
Range of diameters	From 8 to 32 mm
Max. height	110 mm
Power consumption	6 kW
Power supply	230 V single phase, 50-60 Hz
Compressed air	6 Bar
Air Consumption	400 lt/min
Weight	2200 kg
Dimensions	2926 x 2443 x 1850 h mm
Design	Complies with current GMP regulations. Software in compliance with 21 CFR part11



LT01_ p.16



Production output	400 pcs/min
Range of diameters	From 8 to 32 mm
Max. height	110 mm
Power consumption	2 kW
Power supply	230 V single phase, 50-60 Hz
Compressed air	6 Bar
Air Consumption	100 lt/min
Weight	800 kg
Dimensions	3323 x 1789 x 1700 h mm
Min. liquid conductivity	1,5/2 μ s
Design	Complies with current GMP regulations. Software in compliance with 21 CFR part11





CMP di Pilastro srl
36030 Costabissara · VI · Italy
Via G. Galilei, 26/30
T +39 0444 971716
F +39 0444 553262
info@cmp-pharma.it
www.cmp-pharma.it